



KEY FEATURES

- Built-in 30°(narrow) or 60°(wide) symmetric optics
- Thermally managed for maximum longevity
- Robust construction suitable for outdoor applications
- Operational and environmental benefits of LED technology
- Adjustable Mounting Bracket
- Multiple versions to suit requirements



MODEL NUMBER SELECTOR Example: PODLED-CW-C-ALU-POD

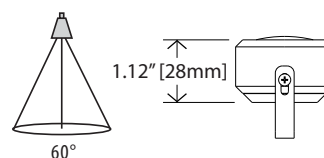
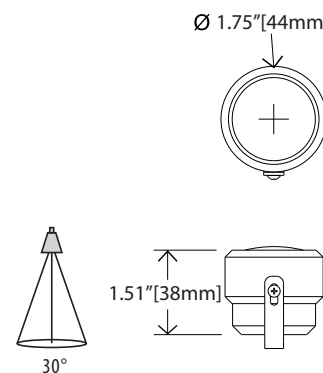
MODEL	COLOR	OPTIC	FINISH	VERSION
PODLED				
	CW - Cool White NW - Neutral White WW - Warm White CUS - Custom <i>Contact for custom color</i>	C - Clear Glass F - Frosted Glass	ALU - Aluminium CUS - Custom <i>See pg2 for custom finishes</i>	POD -POD with arm REC -Recessed EYE -Eyebrow

TECHNICAL SPECIFICATIONS / MAXIMUM RATINGS

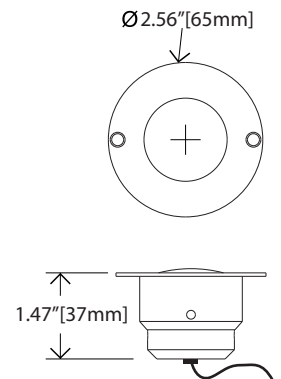
HOUSING	Aluminum
MOUNTING	L Bracket or Recessed with Surface 8-32 screws
VOLTAGE MAXIMUM	16 VDC
TYPICAL INPUT VOLTAGE	12 VDC
POWER	1.8 W @ 12 VDC
CURRENT	150 mA @ 12 VDC
CONNECTIONS	3Ft Flying Lead
TEMPERATURE RANGE	-40°C – +85°C
TYPICAL CASE TEMPERATURE	~15°C Above Ambient Temperature
CERTIFICATIONS	General Application
INGRESS PROTECTION	IP54
COLOR TEMP RANGE	CW: 6500K NW : 4300K WW: 3500K
CRI VALUE	CW: 75 NW : 75 WW: 80
TOTAL LUMENS	67
TOTAL SCOTOPIC LUMEN	154
WEIGHT	0.09 lb 0.04 kg

DIMENSIONS

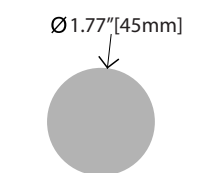
POD



REC & EYE

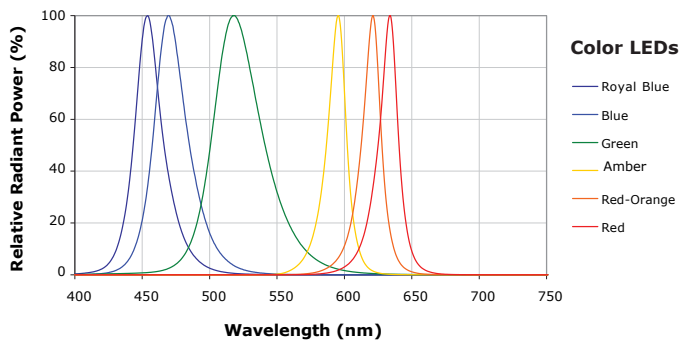
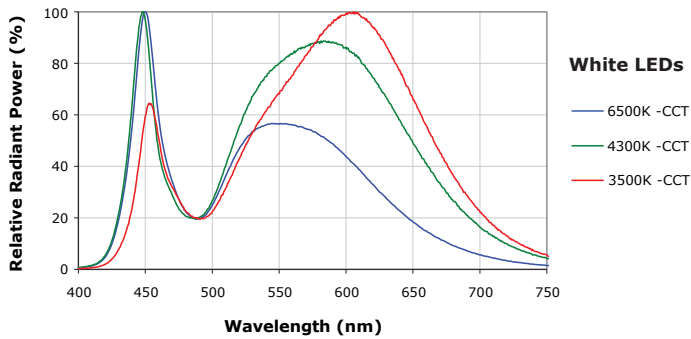


REC & EYE Cutout



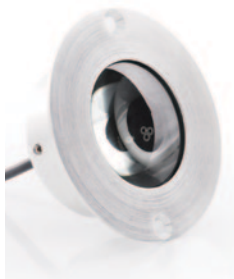
Recessed opening 1.97" [50mm] deep

PHOTOMETRICS



VERSION OPTIONS

REC- Recessed



POD- Pod with L Bracket



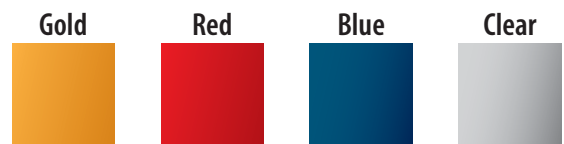
EYE- Eye Brow



CUSTOM OPTIONS

CUSTOM FINISHES

Anodized Aluminum



Please contact for further options

Powder Coated Aluminum



Please contact for further options